



Working Together to Make College Possible

Capital Partners for Education (CPE) is committed to putting motivated low income youth on the path to college.

As the only organization in the Washington DC Metro area that supports low income students in grades 9 through 12 with a combination of private high school scholarships, mentoring, academic support and enrichment programming, CPE is achieving real results.

CPE students attend college at nearly three times the rate of their DC Public School counterparts, overcoming barriers related to having limited resources and being the first in their families to have access to a post-secondary education.

Since 1993, nearly 400 students have been impacted by the program. Today, Capital Partners for Education serves a total of 132 young people and has sent 100% of its graduates on to college for the past three years.

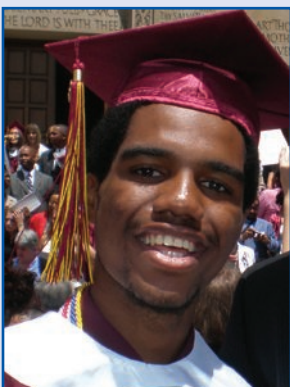


Siomara Segovia

CPE Class of 2008

Catholic University of America

For four years Capital Partners supported me academically, and my success in school was a direct result. CPE opened new doors for me and prepared me to go on to college. I am now a high school graduate and a student at Catholic University! My hope is that CPE will continue growing and that many more students are able to have the opportunities I did. It truly changed my life.



Jesse Kirkland

CPE Class of 2008

Yale University

I'm currently a freshman at Yale. I owe being here in large part to Capital Partners for Education. I feel that CPE provided me with so much more than just a scholarship. Without CPE, I wouldn't have had the support I did through high school. I hope someday I'll be able to give back to CPE because they have given so much to me.